





English



Shop

Support

My account

Downloads

Homepage / Shop



Because of the covid-19 pandemic and when ordering a license in MyKNX, it is important to indicate a shipping address on which the required license dongle can be delivered. Should your company offices be closed for containment reasons, please make sure to indicate a postal address on which you are available to receive the dongle. Please also note that in some regions, our courier may be experiencing delivery restrictions, which may change from day to day (see [https://www.ups.com/be/en/service-alerts.page?loc=en\\_BE](https://www.ups.com/be/en/service-alerts.page?loc=en_BE)). Should your dongle not reach you after ordering and paying, please contact [sales@knx.org](mailto:sales@knx.org).



#### Software

- All software
- ETSS Professional
- ETSS Lite
- ETSS Supplementary
- ETS Inside
- ETS Inside Linux
- KNX Virtual

#### Upgrade options

See all the available upgrade options that you have for your current products.



#### ETS Apps

- All ETS Apps
- Device Configuration Apps
- Diagnostic
- ETS Commissioning
- Graphical Project Design
- Project Design
- Project Documentation
- Project Export
- Project Management



#### eBooks / Amazon

- All ebooks
- Basic course
- Advance course
- Handbook



#### Books / Paper

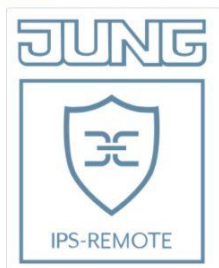
- All PaperBooks
- Basic course
- Advanced course
- Tutor course
- Handbook
- KNX cookbook
- KNX for LEED



#### KNX Specifications

The KNX Specifications cover all technical topics of the KNX Standard, from the first contact with the KNX technology, through the specification, certification rules and testing, and application descriptions.

### JUNG IPS-Remote



The ETS app JUNG IPS-Remote enables the remote maintenance of KNX installations via the Internet after local approval by the customer. The connection is established by the JUNG KNX IP Secure interfaces. The remote maintenance works independent of the type of internet connection and doesn't require any configuration of the local network environment. After release via a communication object, the IP interface establishes a connection to the Remote Access Server (RAS). The ETS app JUNG IPS-Remote also connects to this server and sets up the corresponding connection. To establish an encrypted connection between the ETS and the remote IP interface, the new IPS-Remote connection must be used.

[> Developer website](#)

Version 1.0.10

Available for  
» ETS5

Partner Price

€0

VAT exclusive

 Buy

### JUNG KNX SECURE KEY LOADER



ETS APP: JUNG KNX SECURE KEY LOADER

Note:  
JUNG supports you in building up know-how about KNX Secure! We cover the hardware and software measures offered by KNX Secure in webinars. After successful completion you can receive a voucher that reduces the purchase price of this app. Further information is available at: [www.jung.de/contact-knx-secure](http://www.jung.de/contact-knx-secure)

Content:  
In order to securely integrate the scanned device certificates into the ETS, the installer transfers the JSON files created with the JUNG KNX Secure Scanner to his computer. Several files can come together there, which he archives and imports into the ETS  
[Show more](#)

[> Developer website](#)

Version 1.0.38

Available for  
» ETS5

Partner Price

€299

VAT exclusive

 Buy

### Service App



Area of application:

Devices can be maintained comfortably using the JUNG ETS Service App. It is possible to download new firmware to existing devices. In addition, older firmware versions can also be transferred to existing devices (e.g. in the case of a device exchange).

The programming interface of the ETS is used for a firmware programming operation. All KNX media are supported here (TP, IP, RF).

[> Developer website](#)

Version 1.1.0.1207

Available for  
» ETS5

Partner Price

€0

VAT exclusive

 Buy

### JUNG IPS-Remote


[Developer website](#)

Version 1.0.10

Available for:  
» ETS5

The ETS app **JUNG** IPS-Remote enables the remote maintenance via the Internet after local approval by the customer. The connection is established by the **JUNG** KNX IP Secure in maintenance works independent of the type of internet connection. After release via a communication object, the IP interface of the Remote Access Server (RAS). The ETS app **JUNG** IPS-Remote server and sets up the corresponding connection. To establish an encrypted connection between the ETS and new IPS-Remote connection must be used.



#### JUNG IPS-Remote

Amount: 1  
Key type: automatic  
Price: €0.00


#### Service App

Amount: 1  
Key type: automatic  
Price: €0.00

Price excl. VAT: €0.00

[Clear](#) [Checkout](#)
[Buy](#)

### JUNG KNX SECURE KEY LOADER


[Developer website](#)

Version 1.0.38

#### ETS APP: JUNG KNX SECURE KEY LOADER

Note:  
**JUNG** supports you in building up know-how about KNX Secure! We cover the hardware and software measures offered by KNX Secure in webinars. After successful completion you can receive a voucher that reduces the purchase price of this app. Further information is available at: [www.jung.de/contact-knx-secure](http://www.jung.de/contact-knx-secure)

#### Content:

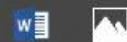
In order to securely integrate the scanned device certificates into the ETS, the installer transfers the JSON files created with the **JUNG** KNX Secure Scanner to his computer. Several files can come together there, which he archives and imports into the ETS

[Show more](#)

Partner Price

€299

VAT exclusive

[Buy](#)


#### Service App


[Developer website](#)

Version 1.1.0.1207

Available for:  
» ETS5

#### Area of application:

Devices can be maintained comfortably using the **JUNG** ETS Service App. It is possible to download new firmware to existing devices. In addition, older firmware versions can also be transferred to existing devices (e.g. in the case of a device exchange).

The programming interface of the ETS is used for a firmware programming operation. All KNX media are supported here (TP, IP, RF).

Partner Price

€0

VAT exclusive

[Buy](#)



English



Shop

Support

My account

Downloads

Homepage / Checkout

1. Overview

2. Invoice

3. Shipping

4. Extra

5. Payment

6. Confirmation

Voucher

Select your voucher:

Do not use a voucher

Product

Amount

Price

1 JUNG JUNG IPS-Remote [Albrecht Jung GmbH & Co. KG]



1

€0.00



2 JUNG Service App [Albrecht Jung GmbH & Co. KG]



1

€0.00



Continue



English



[Shop](#) [Support](#) [My account](#) [Downloads](#)

[Homepage](#) / [Checkout](#)

1. Overview

2. Invoice

3. Shipping


4. Extra

5. Payment

6. Confirmation

Your cart

By completing the ordering procedure you will receive an e-mail to with all the details of your order.

Product	Amount	Price
1  JUNG IPS-Remote [Albrecht Jung GmbH & Co. KG] 	1	€0.00
2  Service App [Albrecht Jung GmbH & Co. KG] 	1	€0.00
Total price		€0.00
VAT (16.00%)		€0.00
To Pay		€0.00

Invoice Address

ALBRECHT JUNG GMBH & CO. KG  
Volmestraße 1  
58579 Schalksmühle  
Germany

[Change Address](#)

Shipping Address

ALBRECHT JUNG GMBH & CO. KG  
Volmestraße 1  
58579 Schalksmühle  
Germany

No shipping required

[Change Address](#)

Payment Method

No payment  
Your order is free of charge, therefore no payment is required. Press the 'Continue' button to proceed.

[Confirm](#)



English



[Shop](#) [Support](#) [My account](#) [Downloads](#)

[Homepage](#) / [My account](#) / [Products](#)

Q

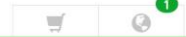
☒ Group by:  Sort by:  Product:  Export

[Obtain licenses](#)

License #9000000356663	JUNG IPS-Remote	<a href="#">Download all software</a>
License #9000000356664	Service App	<a href="#">Download all software</a>



English ▼



Shop Support My account Downloads

Homepage / My account / Products

Q

Group by: License ▼ Sort by: Product name ▼ Product: All ▼ Export ▼

Obtain licenses

License #9000000356663 JUNG IPS-Remote Download all software

Product Name	License Number	Product License	Software
 JUNG IPS-Remote ETS Apps Albrecht Jung GmbH & Co. KG	9000000356663	Q	<input type="text"/> Add key <a href="#">Download</a>

License #9000000356664 Service App Download all software

Product Name	License Number	Product License	Software
 Service App ETS Apps Albrecht Jung GmbH & Co. KG	9000000356664	Q	<input type="text"/> Add key <a href="#">Download</a>



ETS™

ETS

Overview

Bus

Catalogs

Settings

Projects

Archive

ETS Inside

+

📄

📁

Search

🔍

Name

Last Modified

Status

Test

26.10.2020 16:07

Editing

KNX News

KNXx30 – A celebration to remember

20.10.2020

KNX can proudly look back at 30 years of milestones, success and a continuous growth of a worldwide community. Although KNX is giving reasons to celebrate every day, we would like to add the final touch to a great jubilee! So KNX Association celebrated the 30th birthday with a blast and a 10-hour video marathon on the 20th of October 2020! A quick history lesson Born in 1990, KNX first saw the light and the whole industry saw a new era of smart homes and smart buildings growing with it. Once the technology was born, it was clear that the founding members have created something of beauty, which had to be made available to the world – And the world agreed! KNX can now proudly say that it is not a technology among many others, it is the first choice, when it comes to smart homes and smart buildings. This was also acknowledged by international standardisation bodies, such as the CEN/CENELEC, as well as ISO/IEC. KNX, being approved as an international standard and used by more than 500 manufacturers in their devices, KNX has paved the way to be the first real future-proof technology in the world! **Is age really just a number? Not in the case of KNX!** But not only the fact that KNX entered the market as first open technology for smart homes and smart buildings brought KNX to where it is after 30 years. The early focus on training, certification and worldwide availability has been the success of KNX ever since its beginnings. Today's regional groups on every continent, almost 8,000 available KNX devices, which never in compatibility. But KNX, now with 30 years has never felt old! On the contrary! With has always developed faster than any other technology on the market and led the way to new opportunities. Age might be just a number, but passing with KNX on the top, is another success of the whole KNX Community. **leading technology – A reason to celebrate the whole community!** The whole KNX Community celebrated the 30th anniversary online, which did not only bring people together, but literally brought the countries all over the world. Starting with the Asian KNX National Groups and finishing with the European KNX National Groups in the western hemisphere, it underlined once more that KNX is not only a technology in the market, but an entire vision which keeps KNX strong. KNX Association would like to thank the many viewers of the event, as well as all representatives of the KNX National Groups, as well as all representatives of the KNX community.

New KNX Products

IO Interface: GRIO-16CH-KNX - Universal Module 16 Out Plus

Johnson Controls International (Germany)

⏪

⏩



The hybrid actuators offer the best mix of inputs and outputs in interaction with various applications for the ETS. The series demonstrably reduces the costs for hardware, installation (effort & time) and programming. Due to the lower space and energy requirements, the heat development is sustainably reduced. In addition, the modules offer an option for permanent data backup.

The **GRIO-16CHxx-KNX** DIN RAIL 16 input/output Module is an EIB/KNX DIN rail mounting device with 16 inputs and 16 outputs.

Apps

+

🔄

3 active / 11 installed

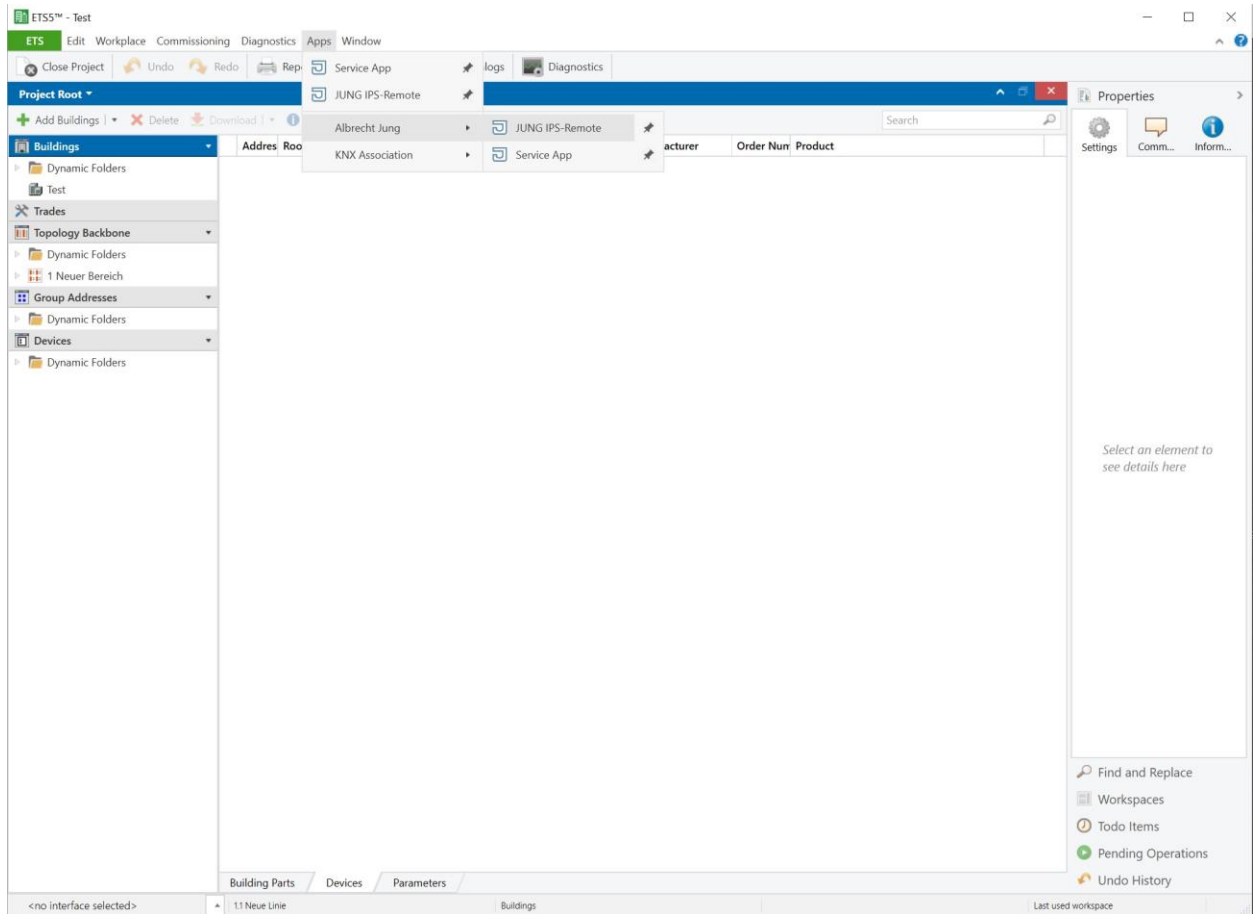
Name	Vendor	Version	License
Compatibility Mode App	KNX Association	5.7.1182.38982	📄
Device Compare	KNX Association	5.7.1182.38982	🚫
Device Templates	KNX Association	5.7.1182.38982	🚫
EIBlib/IP	KNX Association	5.7.1182.38982	🚫
Extended Copy	KNX Association	5.7.1182.38982	🚫
JUNG IPS-Remote	Albrecht Jung	1.0.10	📄
Labels	KNX Association	5.7.1182.38982	🚫
Project Tracing	KNX Association	5.7.1182.38982	🚫
Replace Device	KNX Association	5.7.1182.38982	🚫
Service App	Albrecht Jung	1.1.0.1207	📄
Split and Merge	KNX Association	5.7.1182.38982	🚫

ETS Version: ETS 5.7.5 Beta (Build 1182)

License: ETS5 Supplementary

Apps: 3 active





ETS

Overview

Bus

Catalogs

Settings

Projects

Archive

ETS Inside

+

📄

🔍

Search

🔍

Name	Last Modified	Status
Test	26.10.2020 16:07	Editing

KNX News

KNXis30 – A celebration to remember

20.10.2020

KNX can proudly look back at 30 years of milestones, success and a continuous growth of a worldwide community. Although KNX is giving reasons to celebrate every day, we would like to add the final touch to a great jubilee! So KNX Association celebrated the 30th birthday with a blast and a 10-hour video marathon on the 20th of October 2020! A quick history lesson Born in 1990, KNX first saw the light and the whole industry saw a new era of smart homes and smart buildings growing with it. Once the technology was born, it was clear that the founding members have created something of beauty, which had to be made available to the world – And the world agreed! KNX can now proudly say that it is not a technology among many others, it is the first choice, when it comes to smart homes and smart buildings. This was also acknowledged by international standardisation bodies, such as the CEN/CENELEC, as well as ISO/IEC. KNX, being approved as an international standard and used by more than 500 manufacturers in their devices, KNX has paved the way to be the first real future-proof technology in the world! **Is age really just a number? Not in the case of KNX!** But not only the fact that KNX entered the market as first open technology for smart homes and smart buildings brought KNX to where it is after 30 years. The early focus on training, certification and worldwide availability has distinguished KNX ever since its beginnings. Today's results are 45 KNX National Groups on every continent, almost 100.000 certified KNX installers, 8.000 available in compliance with the standard, KNX has always been the market leader, passing with the success leading to the whole world celebrating the 30th anniversary in 30 countries by the Asian KNX National Group underlines the technology which keeps growing and thank the National C

Licenses

+

📄

1 KNX

ETS5 Supplementary

JUNG IPS-Remote

JUNG KNX SECURE KEY LOADER

Online KNX Product Catalog

Service App

KNX

Firmware Version

2.140.4419

Licenses

5

ETS5 Supplementary

JUNG IPS-Remote

JUNG KNX SECURE KEY LOADER

Online KNX Product Catalog

Service App


New KNX Products

IO Interface: GRIO-16CH-KNX - Universal Module 16 Out Plus

Johnson Controls International (Germany)

⏪

⏩



The hybrid actuators offer the best mix of inputs and outputs in interaction with various applications for the ETS. The series demonstrably reduces the costs for hardware, installation (effort & time) and programming. Due to the lower space and energy requirements, the heat development is sustainably reduced. In addition, the modules offer an option for permanent data backup.

The **GRIO-16CHxx-KNX** DIN RAIL 16 input/output Module is an EIB/KNX DIN rail mounting device with 16 inputs and 16 relay outputs 16A-230 V AC. Inputs are for dry contacts. Connect the inputs to buttons, switches, or output LEDs. Use inputs for power commands, dimming, shutter control, or relays as analog probes to is. Device and LEDs for

ETS Version ETS 5.7.5 Beta (Build 1182)

License ETS5 Supplementary

Apps 3 active