

Product data sheet

Universal automatic switch 2.2 m



Reference number

LS 3281-1

KNX automatic switch 2.2 m

Universal

for bus coupling unit 3 ref.-no.: 2073 U

Protection level IP 44 is ensured with sealing kit ref.-no. AS CD 50 DS and "IP 44 frame" of the respective design range.

IP 44 suitable for indoor and outdoor installation

ETS product family: Physical sensors

Product type: Movement

Intended use

- Requirement-oriented control of lighting and other electrical loads
- Mounting on bus coupling unit 3 (ref.-no.: 2073 U)

Product characteristics

- Automatic switching of lighting depending on the thermal movement and ambient brightness
- 2 PIR sensors
- Detection range 180°
- Integrated brightness sensor
- Switch-off brightness can be set
- Output functions: Switching, staircase function, switching with forced position, value transmitter, light scene extension, operating mode setting for room temperature controller
- Extension of the detection area by way of operating several devices as main unit or extension unit
- Sensitivity can be set manually
- Status LEDs
- Manual switching on the device

Additional characteristics of "Universal" version:

- Manual operation with IR remote control possible (ref.-no.: KNX PM FB IR)
- Up to half of the detection area can be screened off (parameter setting)
- 5 function blocks for motion detection each with 2 outputs
- Function blocks switchable, e.g. for day/night operation
- Brightness sensor function with 3 limiting values
- Alarm message in case the device is removed from the bus coupling unit
- Temperature measurement

Technical data

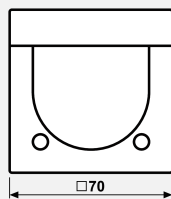
| | |
|--------------------------------|--------------------------------|
| Current consumption KNX: | 3 ... 10 mA |
| Ambient temperature: | -25 ... +55 °C |
| Storage/transport temperature: | -25 ... +70 °C |
| Relative humidity: | 10 ... 100 % (no condensation) |
| Protection class: | III |
| Mounting height: | 1.10 / 2.20 m |
| Detection angle: | 180° |
| Brightness sensor | |

| | |
|--------------------|------------------------|
| Measuring range: | approx. 1 ... 1,000 lx |
| Temperature sensor | |
| Measuring range: | approx. -20 ... +55 °C |
| Accuracy: | ± 1 K |

Thermoplastic (breakproof) high-gloss

Colour:
ivory

Material:
thermoplastic



IP Protection level IP 44 is ensured with sealing kit ref.-no. AS CD 50 DS and "IP 44 frame" of the respective design range.